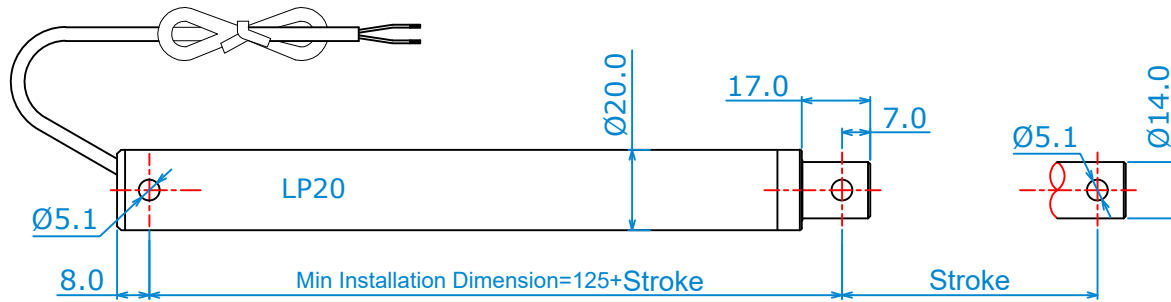


Max load (N)		150	120	100	50
Speed (mm/s)	No load	3	4.5	6	12
	Full load	2.5	3.5	5	10

Cable length 600mm



Recommended max. current: 12 VDC = 0.6 A
 24 VDC = 0.3 A
 Duty cycle: 10% (2 min. in use followed by 18 min. in rest)

Customized stroke lengths (max:200mm)
 Customized front / rear rod end + 10 mm

Customized cables and connectors

Housing Material: Aluminum Alloy

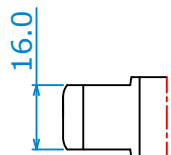
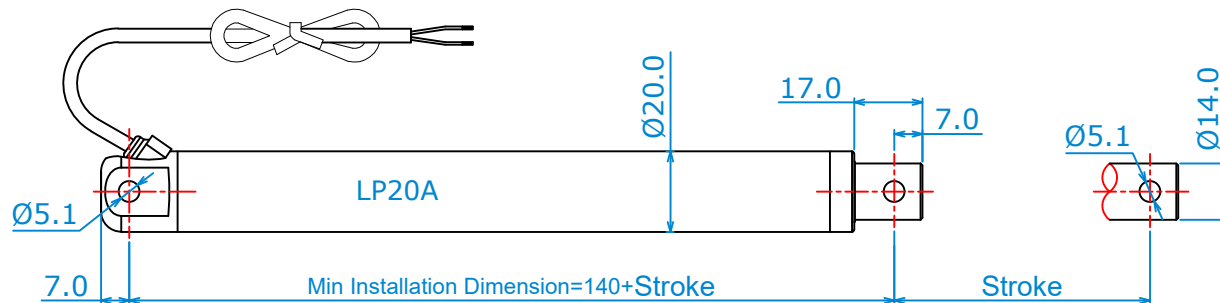
Ambient Temperature: -25°C ~ +65°C

Colour: Silvery

Noise: ≤ 58dB , IP Class: IP65

Built-in Limit switches

Cable length 600mm



Drawing Name:

Linear Actuator LP20

23 Feb 2021

